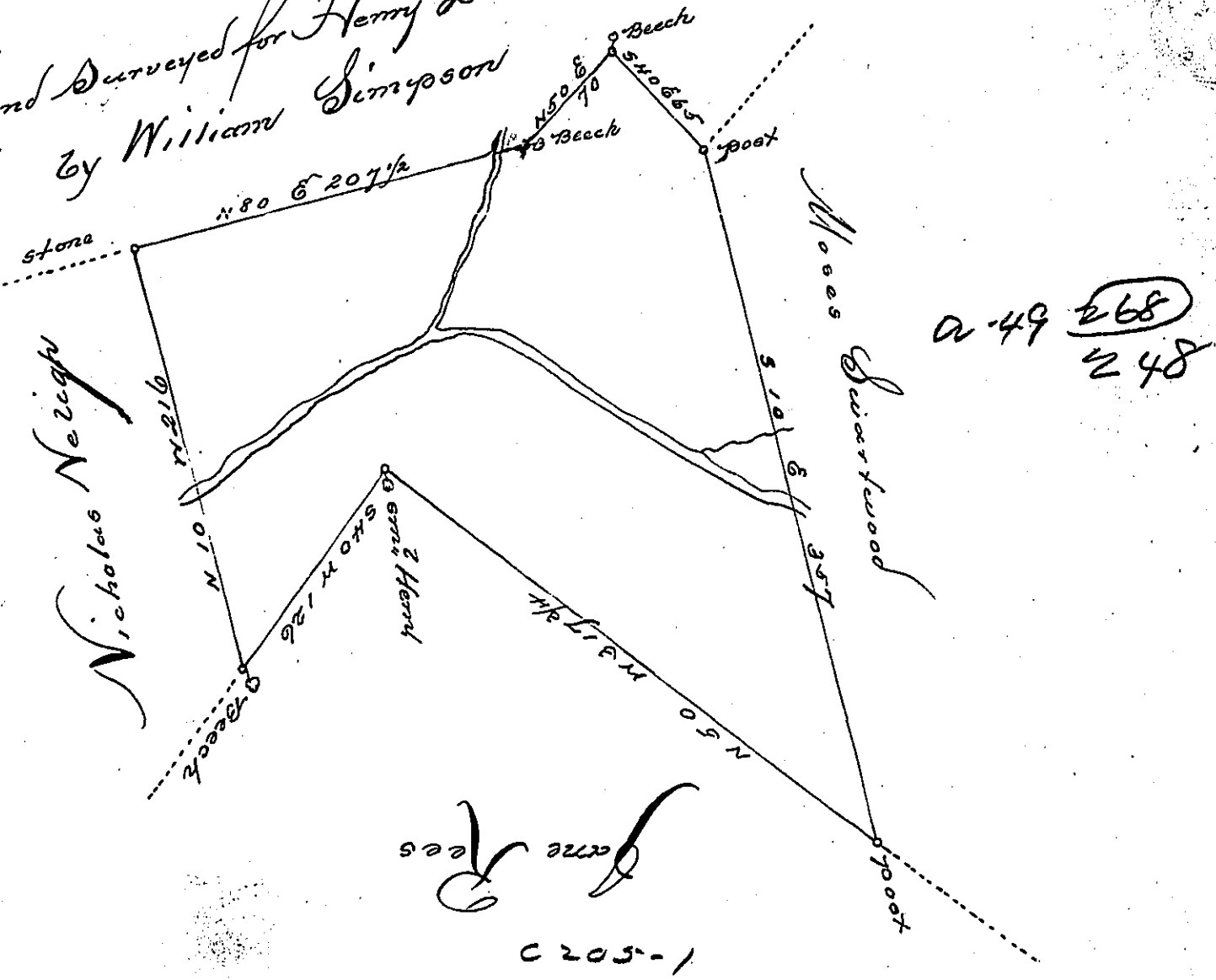


Land Surveyed for Henry Drinker
by William Simpson



James Lees
C 205-1

By Virtue of a Warrant dated the 26 February 1793 Surveyed
the 11 Sept. 1793. to Daniel Wheeler the above described tract of
Land situated on both sides of the Main branch of Lake in the Counties
of Northampton Containing four hundred and sixteen acres and half
and the allowance of Six sq Cent 8/10

Geo Palmer D.J.
Wm Gray D.J.

To Daniel Brodhead Esquire
Surveyor General of Pennsylvania

IN TESTIMONY that the above is a copy of the original remaining on file in
the Department of Internal Affairs of Pennsylvania, made
conformably to an Act of Assembly approved the 16th day of
February, 1833, I have hereunto set my Hand and caused
the Seal of said Department to be affixed at Harrisburg,
this 7th day of March 1899

James W. Latta
Secretary of Internal Affairs.